

DIY: PORTABLE WAXING BOX

SUPPLIES LIST & CUT SHEET

Build a self-contained waxing box that folds up and won't drip on the carpet. It's genius! You can put it on any flat surface, like the kitchen table. As you scrape your skis or snowboard, all the wax falls into the box. Two cutout slats underneath allow you to brush the wax from the box into the garbage. Fold it up and store it away with the rest of your gear. Sounds rad, right? Then let's get to work.



SUPPLIES NEEDED:

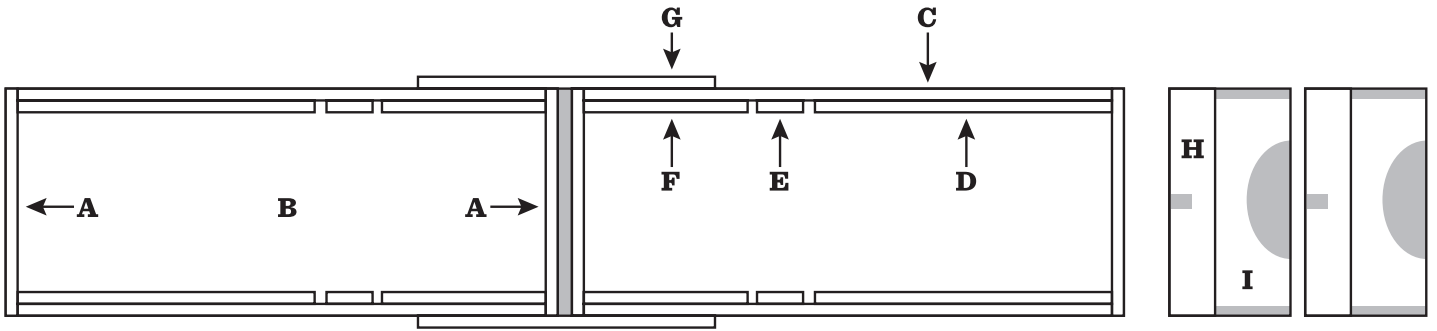
- 4' x 8' Sheet of 1/2" Plywood
- 1 16" Piano Hinge
- 2 Buckle Latches
- 12 Anti-Skid Pads
- Wood Glue
- Wood Screws (1/2", 3/4")
- Old Bike Tube
- 8 - 5/16" x 2" Carriage Bolts with Washers and Wing Nuts
- 2 D-Rings and Mounts

TOOLS NEEDED:

- Screwdriver
- Tape Measure
- Drill with Small Bit
- Pencil
- Construction Square
- Circular Saw (*or, many hardware stores offer cutting services*)
- Small Handsaw
- C-Clamps or Spring Clamps
- Safety Glasses

CUT SHEET

TOP VIEW (OPEN)



CUT SIZES AND QUANTITY LIST

- A. End Caps - 16"x 5.5" (4)
- B. Bottoms - 16"x 37" (2)
- C. Sides - 5"x 37" (4)
- D. Large Braces - 5"x 20" (4)
- E. Small Braces - 5"x 3" (4)
- F. Medium Braces - 5"x 13" (4)
- G. Hinge Braces - 5.5"x 32" (2)
- H. Support Brace - 3"x 16" (2)
- I. Ski/Snowboard Support - 3"x 8" (2)

