

# Antarctica Cruise – Antarctic Explorer

## Dates & Prices:

### Ocean Diamond

Departure Date	Days	Start / End City	Triple	Single Porthole	Single Obstructed	Twin Obstructed	Twin Window	Suite	Balcony Suite
Nov 4, 2020	11	Ushuaia	\$7,495	\$12,995	\$12,995	\$10,495	\$10,995	\$11,995	\$12,495
Nov 13, 2020	11	Ushuaia	\$7,495	\$12,995	\$12,995	\$10,495	\$10,995	\$11,995	\$12,495
Nov 30, 2020	11	Ushuaia	\$7,495	\$13,495	\$13,495	\$10,995	\$11,495	\$12,495	\$12,995
Dec 9, 2020	11	Ushuaia	\$7,495	\$13,495	\$13,495	\$10,995	\$11,495	\$12,495	\$12,995
Feb 16, 2021	11	Ushuaia	\$7,495	\$12,995	\$12,995	\$10,495	\$10,995	\$11,995	\$12,495
Jan 17, 2022	11	Ushuaia	\$8,995	\$15,495	\$15,495	\$12,495	\$13,495	\$14,495	\$14,995
Feb 13, 2022	11	Ushuaia	\$8,995	\$15,495	\$15,495	\$12,495	\$13,495	\$14,495	\$14,995
Mar 6, 2022	11	Ushuaia	\$7,995	\$13,995	\$13,995	\$11,495	\$12,495	\$12,995	\$13,495

### Ocean Adventurer

Departure Date	Days	Start / End City	Triple	Lower Deck	Main Deck Porthole	Main Deck Window	Superior	Deluxe	Suite
Jan 4, 2021	11	Ushuaia	\$10,495	\$11,995	\$13,495	\$14,495	\$15,995	\$17,495	\$18,995
Feb 6, 2021	11	Ushuaia	\$8,495	\$9,995	\$10,995	\$12,495	\$13,495	\$14,995	\$15,995
Jan 12, 2022	11	Ushuaia	\$9,995	\$12,995	\$13,495	\$14,995	\$16,495	\$16,495	\$20,495
Jan 21, 2022	11	Ushuaia	\$9,995	\$12,995	\$13,495	\$14,995	\$16,495	\$16,495	\$20,495
Jan 30, 2022	11	Ushuaia	\$9,995	\$12,995	\$13,495	\$14,995	\$16,495	\$16,495	\$20,495

### World Explorer

Departure Date	Days	Start / End City	Triple	Infinity Suite	Veranda Suite	Superior Suite	Deluxe Suite	Owner's Suite
Nov 3, 2020	12	Ushuaia	\$8,995	\$13,995	\$12,995	\$14,995	\$16,495	\$17,995
Nov 13, 2020	12	Ushuaia	\$8,995	\$13,995	\$12,995	\$14,995	\$16,495	\$17,995
Dec 9, 2020	11	Ushuaia	\$9,495	\$14,495	\$13,495	\$15,495	\$16,995	\$18,495
Dec 18, 2020	11	Ushuaia	\$9,995	\$14,995	\$13,995	\$15,995	\$17,495	\$18,995
Jan 10, 2021	11	Ushuaia	\$9,495	\$14,495	\$13,495	\$15,495	\$16,995	\$18,495

## World Explorer

Departure Date	Days	Start / End City	Triple	Infinity Suite	Veranda Suite	Superior Suite	Deluxe Suite	Owner's Suite
Jan 28, 2021	11	Ushuaia	\$9,495	\$14,495	\$13,495	\$15,495	\$16,995	\$18,495
Nov 3, 2021	11	Ushuaia	\$9,995	\$14,495	\$13,995	\$15,995	\$17,495	\$18,995
Dec 19, 2021	11	Ushuaia	\$11,495	\$16,495	\$15,995	\$18,495	\$19,995	\$21,495
Jan 7, 2022	11	Ushuaia	\$10,995	\$15,995	\$15,495	\$17,495	\$18,995	\$20,995
Jan 16, 2022	11	Ushuaia	\$10,995	\$15,995	\$15,495	\$17,495	\$18,995	\$20,995

**For all departures:** Adventure Options are available on many departures but sell out early. Please check with our sales agent if you would like to add options at time of booking. Sea Kayak \$995; Paddling Excursion \$295; Camping \$295; SUP \$295 – rates are per person

## Additional Information

### Special Payment, Cancellation, and Transfer Policy

REI Adventures standard payment and cancellation policy does not apply to this trip. A special policy applies which is less flexible than the REI policy.

Please review the following cancellation policy carefully and contact REI with questions.

- A deposit of 20% of the full cruise cost is required at time of booking.
- Final payment is due 130 days prior to departure.
- Prices are per person and payments are in U.S. dollars.
- Deposits and payments for pre-expedition and post-expedition services are specific to each item, and are explained and communicated at time of purchase.
- Cancellations received up to 180 days prior to departure are refunded less an administrative fee of \$1250 per person.
- If cancellation is received between 179 and 131 days prior to departure, the full deposit is forfeited.
- For cancellations received within 130 days prior to departure, all deposits and tariffs are forfeited.
- A request to transfer reservations is subject to the same fees outlined above for cancellations.
- Partial refunds are not available for unused service

**Single Accommodations**

If you are traveling alone and wish to share accommodations, we will guarantee double/triple occupancy rates for hotel rooms and ship cabins even if we are unable to match you with a roommate. If you request a single cabin, rates are 1.7 times the double occupancy cabin cost or the listed price for single cabins.

**Promotional Pricing**

Throughout the year certain dates and cabins may offer a promotional discount. Please contact REI Adventures for current savings.

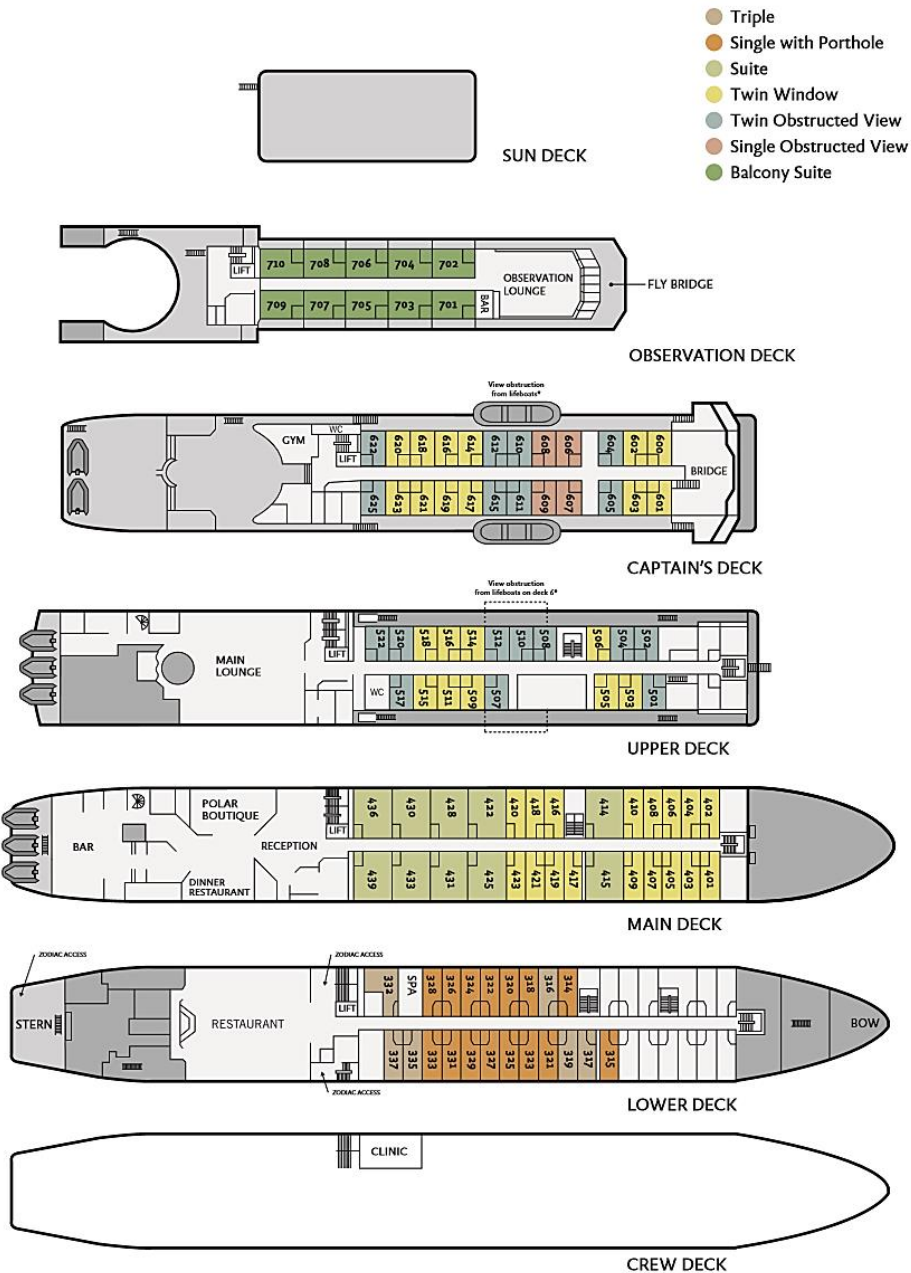
**Non-Exclusive Departures**

REI Adventures partners with Quark Expeditions for our Antarctica cruise programs. Listed departure dates are not sold exclusively by REI Adventures and are not sold exclusively to REI Adventures travelers.

**General Information**

**We highly recommend the purchase of travel insurance through REI Adventures. If coverage is purchased at the time of your initial reservation, the 'Pre-existing Conditions Exclusion' is waived** (certain exclusions apply).

***Continue for deck plans:***



## Ocean Diamond Deck Plans

### Ship Specifications

Staff & Crew 144

Guests 189

Length 407 feet / Breadth 52.5 feet / Draft 16 feet

Propulsion 2 Wichmann Engines, 7,375 horsepower

Ice Class 1D

Cruising speed 14 knots in open water

Registered Nassau, Bahamas

Lifeboats 2 fully enclosed

### Cabin Specifications

**Triple Cabin:** 200 sq. ft.; two twin beds + an upper bed; two portholes.

**Twin Obstructed Cabin:** 200 sq. ft.; one double or two twin beds; picture window (the view is obstructed).

**Twin Window Cabin:** 183 – 200 sq. ft.; one double or two twin beds; picture window

**Suite:** 400 sq. ft.; one double or two twin beds; two picture windows; separate sitting area, two bathrooms

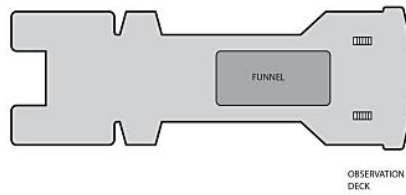
**Single Porthole Cabin:** 200 sq. ft.; one double bed; two portholes

**Single Obstructed View Cabin:** 200 sq. ft.; one double bed, picture window (the view is obstructed by the lifeboats)

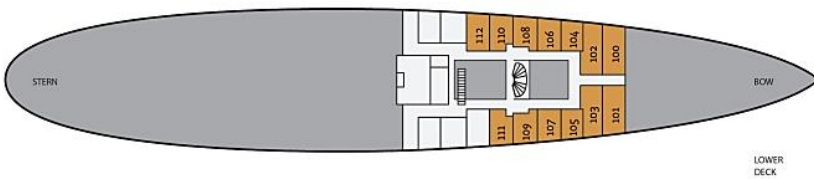
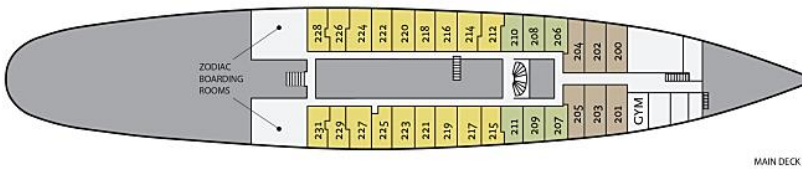
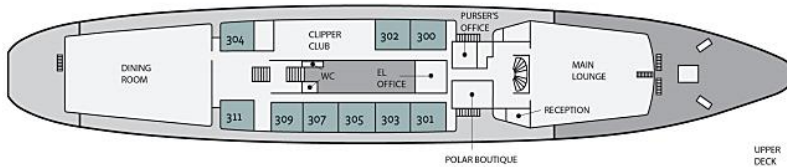
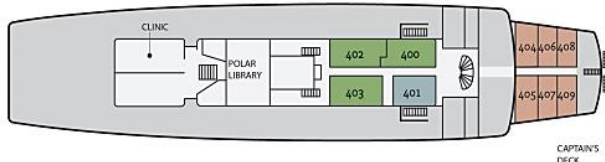
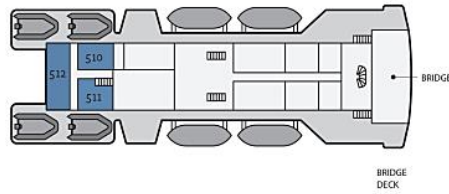
**Balcony Suite:** 325 sq. ft.; one double or two twin beds; full size window with a sliding glass door; private deck w/chairs

All cabins have a private bathroom with shower, refrigerator, TV and DVD player.

Cabin sizes are approximate.



- Triple
- Lower Deck Twin
- Main Deck Twin Porthole
- Main Deck Twin Window
- Superior
- Deluxe
- Suite
- Owner's Suite



## Ocean Adventurer Deck Plans

### Ship Specifications

Staff & Crew 87  
 Guests 132  
 Length 332 feet / Breadth 53 feet / Draft 15 feet,  
 Propulsion Rolls Royce Diesel Twin Engines, 6  
 cylinder, 5400 horsepower  
 Ice Class 1A  
 Cruising speed 12 knots in open water  
 Registered Bahamas  
 Lifeboats 4 partially enclosed

### Cabin Specifications

Triple Cabin: 128 sq. ft.; two lower twins and one upper berth; porthole.

Lower Deck Twin Cabin: 133 sq. ft.; two lower twin beds; porthole.

Main Deck Twin Porthole Cabin: 118 sq. ft.; two lower twin beds; porthole.

Main Deck Window Cabin: 139 sq. ft.; two lower twin beds; two windows.

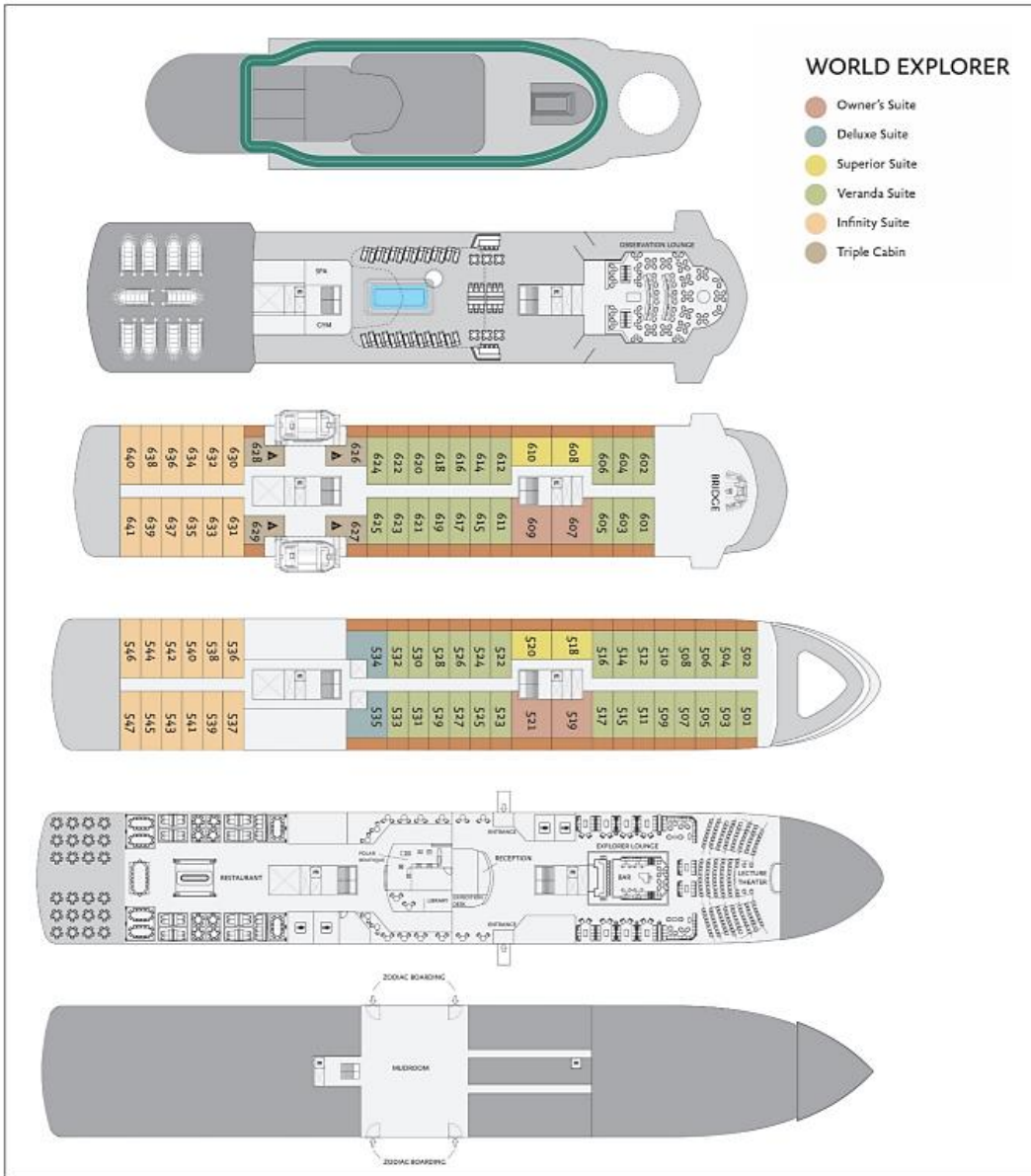
Superior Cabin: 142 sq. ft.; two lower twin beds; windows.

Deluxe Cabin: 160 sq. ft.; two lower twin beds; windows.

Suite: 215 sq. ft.; two lower twin beds, windows.

All cabins feature a private bathroom with shower; TV

Cabin sizes are approximate.



## World Explorer Deck Plans

### Ship Specifications

Staff & Crew 125  
 Guests 176  
 Length 413 feet / Breadth 62 feet / Draft 15 feet  
 Propulsion 2 x Rolls Royce 9,000 kw hybrid diesel/electric  
 Ice Class 1B  
 Cruising speed 16 knots in open water  
 Registered Portugal  
 Lifeboats 2 fully enclosed

### Cabin Specifications

Triple Cabin: 242 sq. ft.; 55 sq. ft. walk-out balcony; one double or two twin beds + a sofa bed. Deck 6.

Infinity suite: 270 sq. ft.; one double or two twin beds; floor-to-ceiling glass Juliet balcony. Decks 5 and 6.

Veranda Suite: 215 sq. ft.; 55 sq. ft. walk-out balcony; one double or two twin beds. Decks 5 and 6.

Superior Suite: 278 sq. ft.; 110 sq. ft. walk-out balcony; one double or two twin beds. Decks 5 and 6.

Deluxe Suite: 334 sq. ft.; 110 sq. ft. walk-out balcony; one double or two twin beds. Deck 5.

Owner's Suite: 355 sq. ft.; 110 sq. ft. walk-out balcony, one double or two twin beds. Deck 5 and 6.

All cabins have private bath, sitting room, refrigerator, TV, "infotainment" system, safe.

Cabin sizes are approximate.